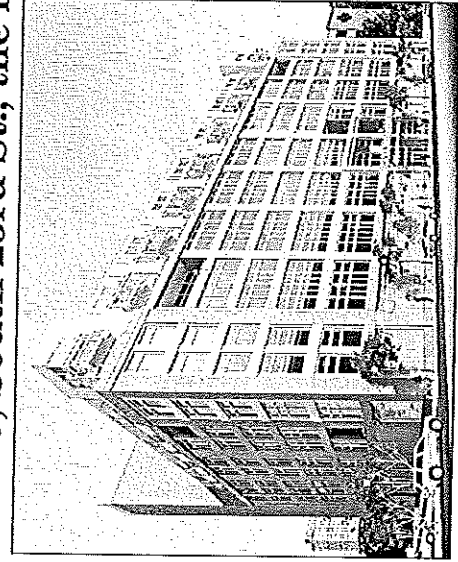


PENNSYLVANIA

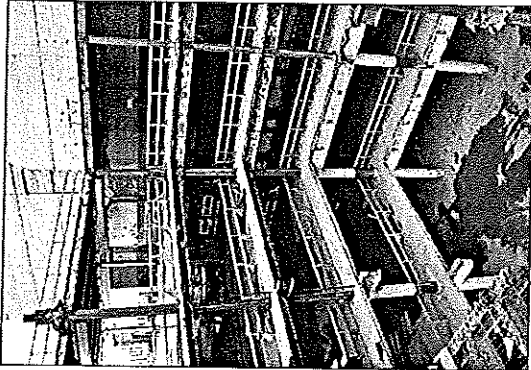
John J. Turchi, Jr., president of Turchi Properties, Inc.

Turchi Properties hosts launch party for a \$70 million condominium community located at 23, South 23rd St., the former AAA Parking Garage

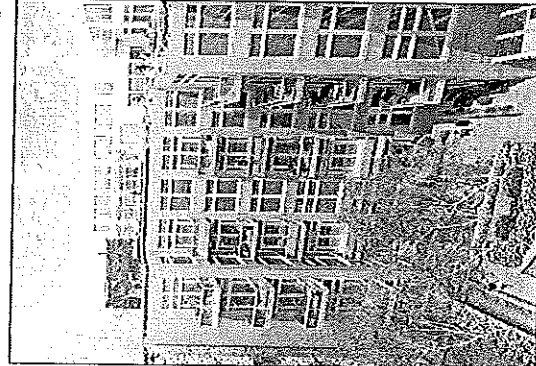
PHILADELPHIA, PA — More than 300 representatives of Philadelphia's business and political communities joined Turchi Properties for the launch of their newest residential development in Philadelphia's Schuylkill Riverfront Corridor: 23 Condominiums. The \$70 million premium condominium community at 23 South 23rd St., the former AAA Parking Garage built in 1972, is also adjacent to the Schuylkill Riverfront Corridor, a \$800 million redevelopment project that will serve as the epicenter for programming from WXPX and internationally syndicated 23 is ideally located in the bullseye of the hottest development area in Philadelphia, said Turchi, president of Turchi Properties. The Clinton area represents \$116 million of investment and is the city's substantially lowest residential development, unveiled 23 with live music by



23 South 23rd St. rendering



23 Interior construction



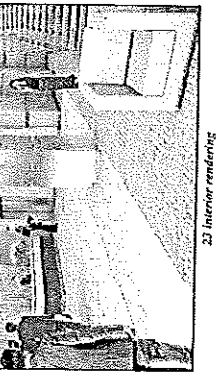
23 Courtyard rendering

units have high ceilings and hardwood floors throughout the living areas. Granite countertops in the kitchen and marble countertops in the bathroom complement the elements of living well and a touch of natural elegance. Each unit features a completely pre-wired digital cable, high speed Internet and phone for residents' added convenience. Available indoor parking, full-wall corridor carpeting and 24-hour security make 23 the most comfortable, secure and welcoming apartment located in Philadelphia, PA.

For more information contact 23 Sales Center at 23 South 23rd St., Philadelphia, PA at 215-664-2323. Turchi Inc. is a property development and management firm located in Philadelphia, PA.

ing close to come home in Philadelphia. Turchi Properties is a national company with a long history of discovering and developing the best real estate opportunities in the country. Turchi Properties is a property development and management firm located in Philadelphia, PA.

For more information contact 23 Sales Center at 23 South 23rd St., Philadelphia, PA at 215-664-2323. Turchi Inc. is a property development and management firm located in Philadelphia, PA.



23 Interior rendering



Launch Party for 23

John J. Turchi, Jr. Turchi Properties



Name: John J. Turchi, Jr.
Title: President
Company: Turchi Properties, Inc.
Location: Philadelphia, PA

Have you ever seen a man who has been successful in real estate for over 21 years and is still going strong? My name is John J. Turchi, Jr. I have been successful in real estate for over 21 years and I am still going strong. I believe in progressive business and I believe in progressive business development. I believe in progressive business development and I believe in progressive business development.

What is the secret to your success? My success is the result of my hard work and my dedication to my clients. I believe in progressive business and I believe in progressive business development. I believe in progressive business development and I believe in progressive business development.

What is the secret to your success? My success is the result of my hard work and my dedication to my clients. I believe in progressive business and I believe in progressive business development. I believe in progressive business development and I believe in progressive business development.

What is the secret to your success? My success is the result of my hard work and my dedication to my clients. I believe in progressive business and I believe in progressive business development. I believe in progressive business development and I believe in progressive business development.

What is the secret to your success? My success is the result of my hard work and my dedication to my clients. I believe in progressive business and I believe in progressive business development. I believe in progressive business development and I believe in progressive business development.